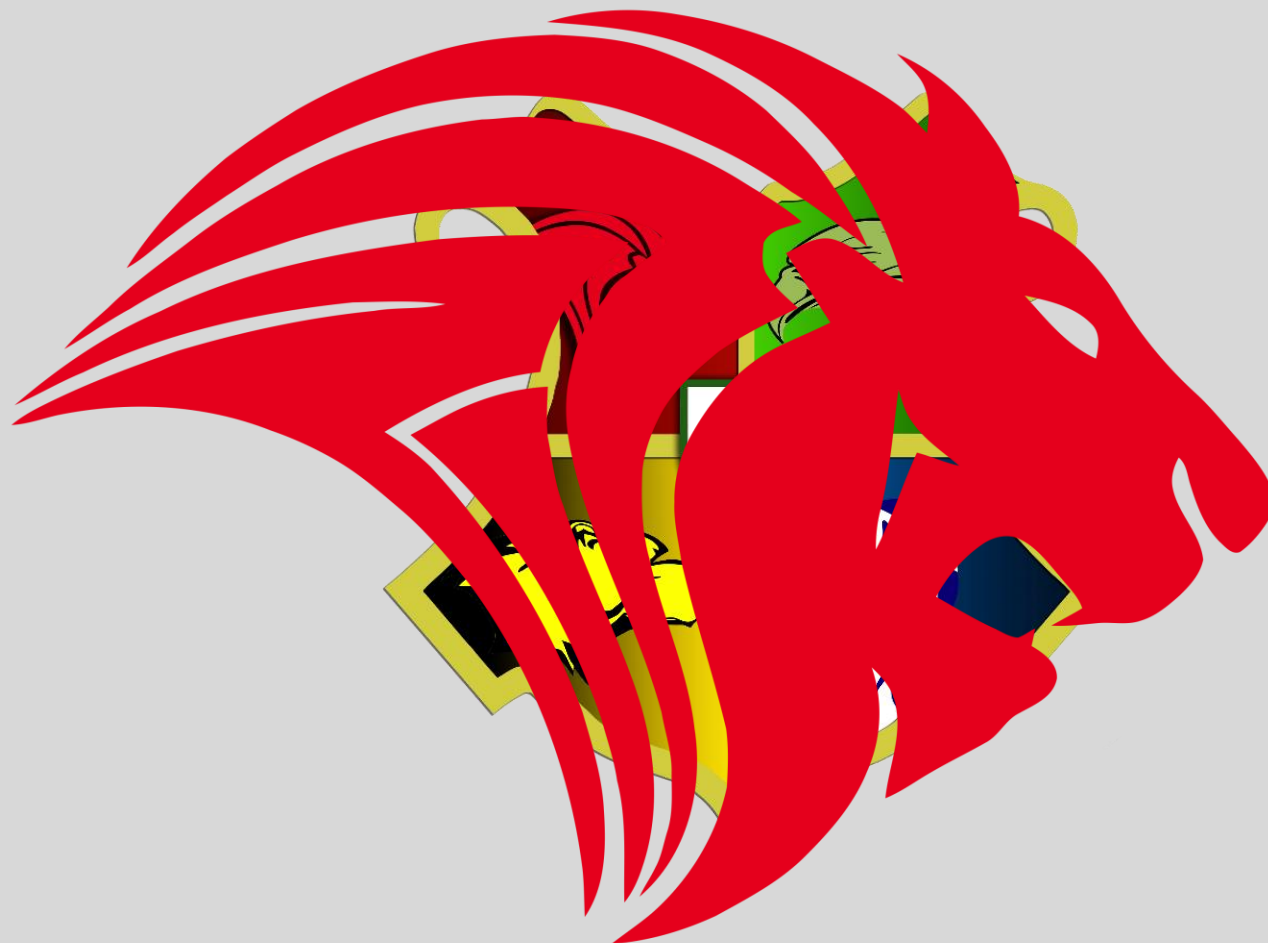




**WELCOME TO...**

**7L1**

**Which house am I in?**





# Hello, my name is Mrs Lee

**Mrs Lee – 7L1**

**Subject:** Art & Photography

**Favourite Colour:** Lots! I am an Art Teacher!

**Favourite Food:** Italian and Mexican

**Why I became a teacher:** I was a Fashion Designer and travelled a lot and when I had children I wanted a career that allowed me to be home more and I love sharing my passion For Art & Design

**How to make me smile in form?** Be happy! Tell me all about your Weekends, your pets, your favourite music!





# What can you expect from your form tutor?

- Be a good role model by promoting respect, responsibility and resilience.
- Create a purposeful, positive culture, where success is recognised.
- Have high expectations and set high standards for my form.
- Support you to make excellent academic progress.
- Encourage you to get involved fully in school life.
- Reward, praise and sanction, where appropriate.
- Be consistent, fair and listen to you.
- Discuss any worries you may have.

**Why is it important that a form tutor does these things?**





# What do I expect from you?

- Be punctual and prepared to learn.
- Wear uniform correctly and with pride.
- Move sensibly, quickly and quietly around school.
- Follow instructions first time and every time.
- Use learning time effectively and take an active part in your learning.
- Take an active part in joining clubs and activities available to you.
- Be resilient and never give up.
- Show respect to staff and students at ALL times.
- Respect the school environment.
- Strive for success and excellence.

**Positive Learner Expectations**  
*Inspire, Achieve, Celebrate*

At Woodrush High School we expect the following from all students at all times:

- Strive for success and excellence**  
believe in yourself and celebrate your achievements
- Be resilient and never give up**  
try hard, take risks and learn from mistakes
- Be punctual and prepared to learn**  
arrive to every lesson, form time and assemblies on time, remember all equipment
- Wear your uniform correctly and with pride**  
blazers on, shirts tucked in, ties smart, zero tolerance for incorrect uniform
- Follow instructions first time and every time**  
listen politely, respond positively
- Show respect to staff and students at all times**  
swearing, talking back, bullying will not be tolerated
- Use learning time effectively**  
use the toilet and fill water bottles at break and lunchtimes only
- Move sensibly, quickly and quietly around school**  
walk to the left - no running
- Respect the school environment**  
litter in bins, no chewing gum, no graffiti or vandalism

**Excellence through Endeavour**

**Why is it important that a form tutee does these things?**



# Form Time

- Arrive at school for 8:30am (8:50am on a Wednesday) and line up for notices.
- Uniform check during line up.
- Equipment check in classrooms.
- Form activities:
  - Assembly
  - Literacy / Numeracy
  - ASPIRE sessions (PSHE)
  - Woodrush weekly celebrations
- Talk with your form tutor about your achievements or if you need support.



# Achievement?

- Achievement Points – awarded for demonstrating good progress in lessons.
- Character Points – awarded for demonstrating good character traits.
- Blazer flashes – awarded for outstanding contribution to a subject.
- Staff shout outs - awarded for outstanding contribution to a subject.
- Postcards – awarded for any of the above.
- Rewards Events – awarded for achieving a high number of achievement/character points in a half-term.
- Reward Trips – awarded to the winners of the House Cup!



# Houses?



- Compete against other houses to win the House Cup!
- Enter inter-house competitions (from poetry to football to sports day) to win points for your house!
- The winner of the House Cup visits Drayton Manor!



# Student Packs

## **Your student packs contain:**

- Induction booklet
- Passport to Woodrush
- Subject booklet



# Passport to Woodrush

- The 'Passport to Woodrush' will help form tutors and tutees get to know each other quickly.
- Please complete the 'Passport to Woodrush' over the summer.
- Please bring the 'Passport to Woodrush' with you on your first day in September.



# Subject booklet

- The subject booklet contains pictures and information about your different teachers.
- It also contains information about what you will be learning next year and some activities for you to do over the summer.
- Please bring your completed 'subject booklet' with you on your first day in September.

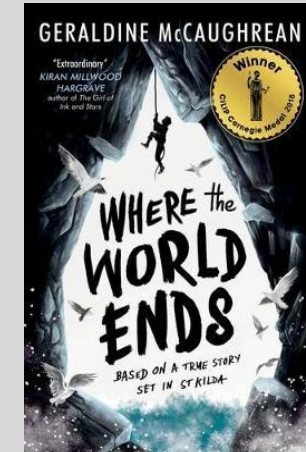
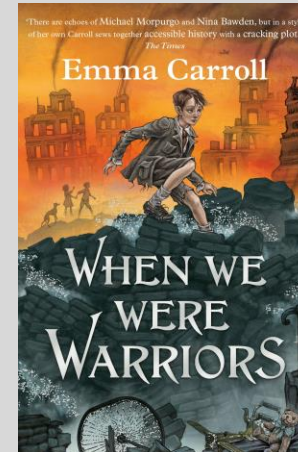
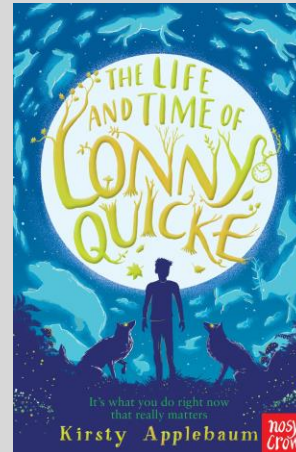
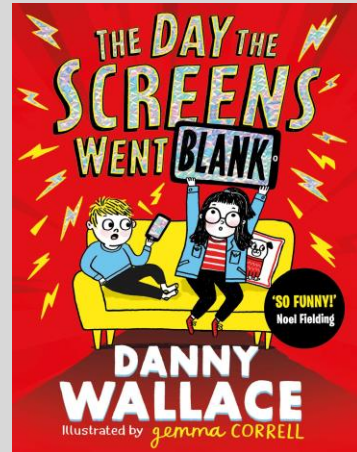
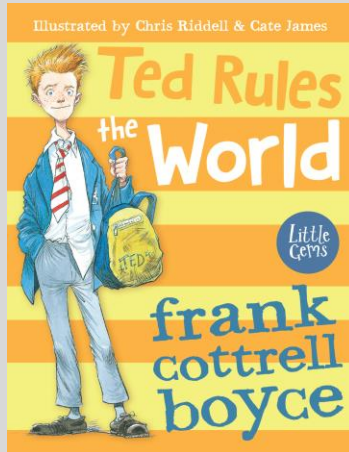
# Reading at Woodrush

*"The more that you read, the more things you will know.  
The more that you learn, the more places you'll go."*

*- Dr Seuss*



# Reading for Pleasure



- We want you to read your book over the summer.
- In September, we will be discussing your books in form.
- If you complete your book, spend time reading other books by the same author and visit our library here at the Community Hub to get and read more books.

# Reading for Pleasure

- At the beginning of the year, you will take a Star Reader test which is 35 reading comprehension questions.
- Once you have read a book, you will log back onto Accelerated reader and take a test on the book you have read - Accelerated Reader.
- You can log on to Accelerated Reader in an evening from home until 8pm. To complete quizzes which will be set as homework.
- If you are not scoring the national average on your Star Reading tests or reading below your age, you may be identified for intervention outside of your lessons.



# Reading Monitoring

- Throughout the year we will monitor the progress of your reading.
- Each half term you will be given a reading homework
- You will read an extract on Microsoft Teams – could be fiction or non-fiction
- From this reading we can see how well you are reading and put in place support if you need it.
- Our library have a team of volunteers that support small group work reading if you're struggling.