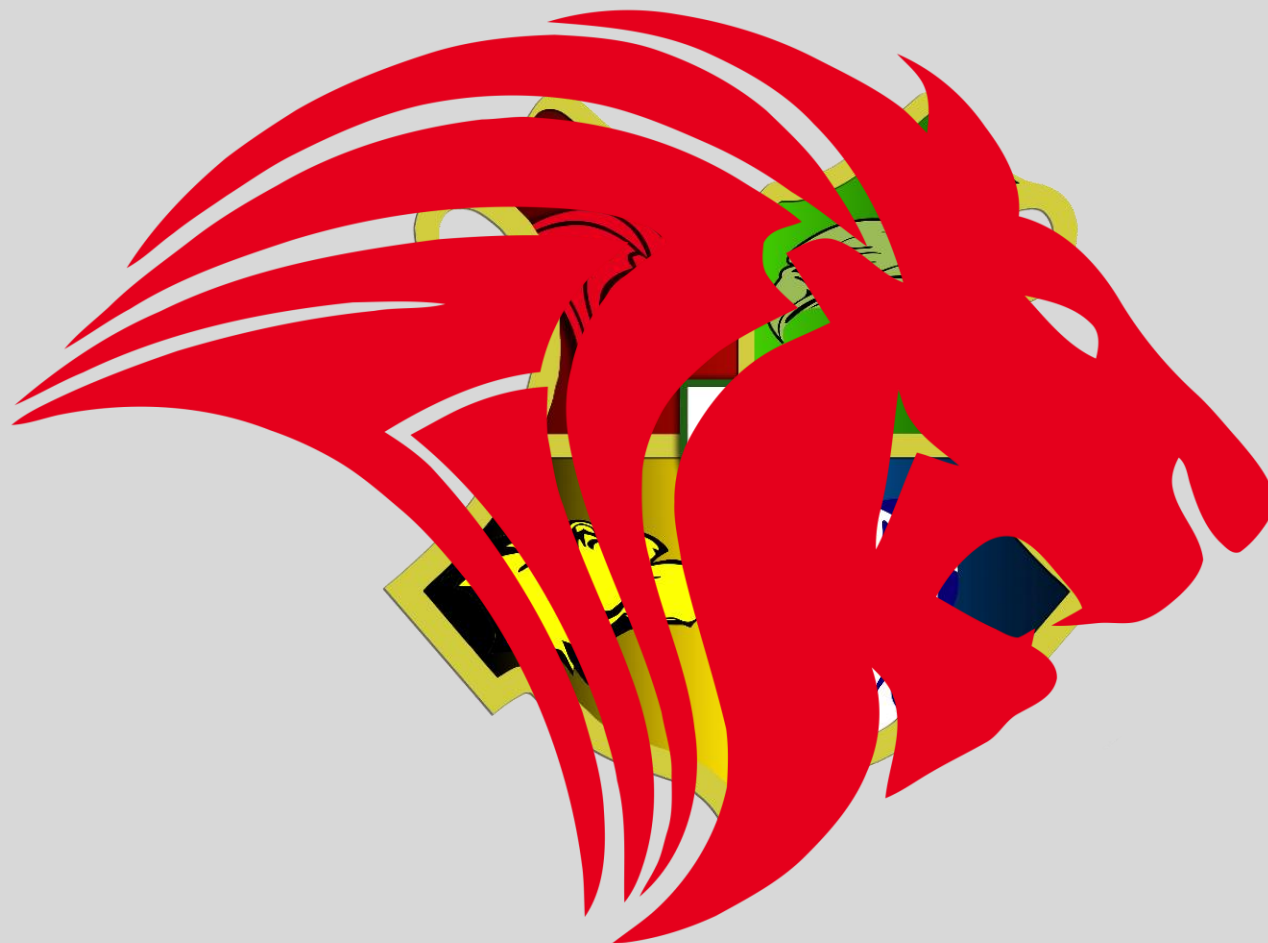




WELCOME TO...

7L2

Which house am I in?

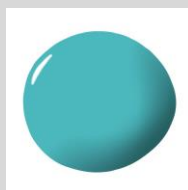




Hello, my name is Mrs Martin

SUBJECT – Art & Photography

FAVOURITE COLOUR – Teal



FAVOURITE FOOD – Mediterranean

WHY I BECAME A TEACHER – Because Art can bring so much joy and expression and I want to share that.

HOW TO MAKE ME SMILE – Say hello and smile! :-)





What can you expect from your form tutor?

- Be a good role model by promoting respect, responsibility and resilience.
- Create a purposeful, positive culture, where success is recognised.
- Have high expectations and set high standards for my form.
- Support you to make excellent academic progress.
- Encourage you to get involved fully in school life.
- Reward, praise and sanction, where appropriate.
- Be consistent, fair and listen to you.
- Discuss any worries you may have.

Why is it important that a form tutor does these things?



What do I expect from you?

- Be punctual and prepared to learn.
- Wear uniform correctly and with pride.
- Move sensibly, quickly and quietly around school.
- Follow instructions first time and every time.
- Use learning time effectively and take an active part in your learning.
- Take an active part in joining clubs and activities available to you.
- Be resilient and never give up.
- Show respect to staff and students at ALL times.
- Respect the school environment.
- Strive for success and excellence.

Positive Learner Expectations
Inspire, Achieve, Celebrate

At Woodrush High School we expect the following from all students at all times:

- Strive for success and excellence**
believe in yourself and celebrate your achievements
- Be resilient and never give up**
try hard, take risks and learn from mistakes
- Be punctual and prepared to learn**
arrive to every lesson, form time and assemblies on time, remember all equipment
- Wear your uniform correctly and with pride**
blazers on, shirts tucked in, ties smart, zero tolerance for incorrect uniform
- Follow instructions first time and every time**
listen politely, respond positively
- Show respect to staff and students at all times**
swearing, talking back, bullying will not be tolerated
- Use learning time effectively**
use the toilet and fill water bottles at break and lunchtimes only
- Move sensibly, quickly and quietly around school**
walk to the left - no running
- Respect the school environment**
litter in bins, no chewing gum, no graffiti or vandalism

Excellence through Endeavour

Why is it important that a form tutee does these things?



Form Time



- Arrive at school for 8:30am (8:50am on a Wednesday) and line up for notices.
- Uniform check during line up.
- Equipment check in classrooms.
- Form activities:
 - Assembly
 - Literacy / Numeracy
 - ASPIRE sessions (PSHE)
 - Woodrush weekly celebrations
- Talk with your form tutor about your achievements or if you need support.



Achievement?



- Achievement Points – awarded for demonstrating good progress in lessons.
- Character Points – awarded for demonstrating good character traits.
- Blazer flashes – awarded for outstanding contribution to a subject.
- Staff shout outs - awarded for outstanding contribution to a subject.
- Postcards – awarded for any of the above.
- Rewards Events – awarded for achieving a high number of achievement/character points in a half-term.
- Reward Trips – awarded to the winners of the House Cup!



Houses?

- Compete against other houses to win the House Cup!
- Enter inter-house competitions (from poetry to football to sports day) to win points for your house!
- The winner of the House Cup visits Drayton Manor!

Student Packs

Your student packs contain:

- Induction booklet
- Passport to Woodrush
- Subject booklet



Passport to Woodrush

- The 'Passport to Woodrush' will help form tutors and tutees get to know each other quickly.
- Please complete the 'Passport to Woodrush' over the summer.
- Please bring the 'Passport to Woodrush' with you on your first day in September.



Subject booklet

- The subject booklet contains pictures and information about your different teachers.
- It also contains information about what you will be learning next year and some activities for you to do over the summer.
- Please bring your completed 'subject booklet' with you on your first day in September.

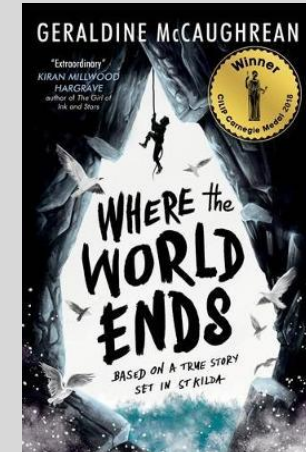
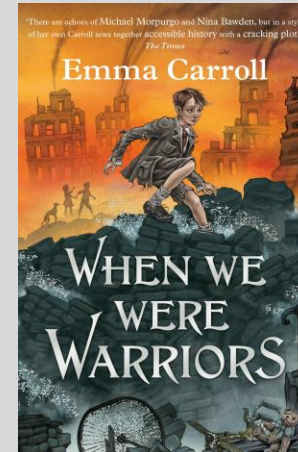
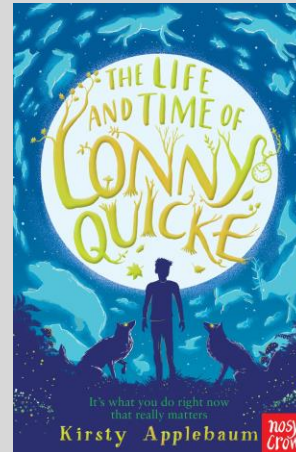
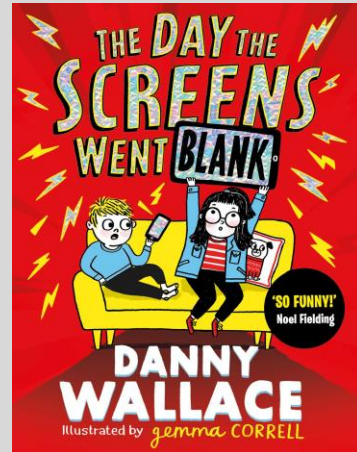
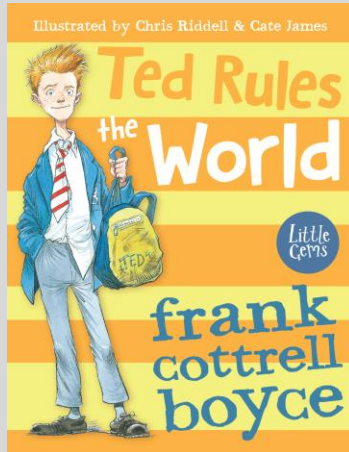
Reading at Woodrush

*"The more that you read, the more things you will know.
The more that you learn, the more places you'll go."*

- Dr Seuss



Reading for Pleasure



- We want you to read your book over the summer.
- In September, we will be discussing your books in form.
- If you complete your book, spend time reading other books by the same author and visit our library here at the Community Hub to get and read more books.

Reading for Pleasure

- At the beginning of the year, you will take a Star Reader test which is 35 reading comprehension questions.
- Once you have read a book, you will log back onto Accelerated reader and take a test on the book you have read - Accelerated Reader.
- You can log on to Accelerated Reader in an evening from home until 8pm. To complete quizzes which will be set as homework.
- If you are not scoring the national average on your Star Reading tests or reading below your age, you may be identified for intervention outside of your lessons.

Reading Monitoring

- Throughout the year we will monitor the progress of your reading.
- Each half term you will be given a reading homework
- You will read an extract on Microsoft Teams – could be fiction or non-fiction
- From this reading we can see how well you are reading and put in place support if you need it.
- Our library have a team of volunteers that support small group work reading if you're struggling.